

2024 annual report to the Community

Cobdogla Primary School

Cobdogla Primary School number: 721
Partnership: Berri & Barmera



School principal: **David Ness** *D Ness*

Date of endorsement: 29/01/2025



Context Statement

Cobdogla Primary School caters for students from R-6. At the time of this report, the enrolment in 2024 is 102. Cobdogla Primary School is classified as Category 4 on the Department for Education Index of Educational Disadvantage. At the time of this report, the school population includes 6% Aboriginal students, 7% students with disabilities, 4% students with English as an additional language or dialect (EALD) funded background, 1% children/young people in care. Further information about the school is available on the school's website (including its context statement), as well as the My School website.

Data Source: Department for Education data holdings from Mid census captured in AUGUST 2024.

Governing Council Report

The Governing Council plays an important role in guiding the direction and development of our school, working collaboratively with staff, parents, and the wider community. Throughout the year, our Governing Council has united to achieve positive outcomes and meaningful progress for Cobdogla Primary School.

The role of the Governing Council is to oversee the school's direction and management, ensuring that decisions align with the needs of the school and its community. Each year, we strive to ensure that our learning environments meet the evolving needs of the school. In line with this, the Council approved funding for important upgrades to the school hall and middle primary classrooms. The hall's roof required repairs, and the cooling system was updated to ensure that the space can be comfortably used during the hot Riverland summers. Whereas a new sliding glass door was installed in the middle primary classrooms.

In addition to these improvements, funding was allocated for a new LED digital sign to replace the outdated metal sign. The new sign will be installed over the Christmas break, ready for the start of the new school year. This sign will help advertise the school and improve parent engagement by displaying important events such as assemblies, open days, and community meetings.

The provision of reliable and secure Out of School Hours Care (OSHC) is vital in supporting families. As part of our ongoing commitment to providing quality care, the Governing Council has reviewed and extended our contract with Happy Haven OSHC Pty Ltd for an additional three years.

Concerns were raised about our current lunch order provider, and after careful consideration, the Governing Council recommended trialling a new local provider. Following the trial period, the decision was made to engage the local provider as our sole lunch provider for 2025.

The last task undertaken by the Governing Council this year was to review the school's values and motto. It was determined that the existing motto and core values were outdated and no longer aligned with the desired school culture. After consulting with students, staff, and the council, it was decided to adopt the new motto, "Together We Thrive," along with core values of kindness, resilience, personal best, and honesty.

On behalf of the Governing Council, I would like to express our gratitude to Principal David Ness, the teaching staff, and the support team. Our students are fortunate to be part of a remarkable community that goes above and beyond to offer a well-rounded education in a nurturing environment.

Cobdogla Primary School is lucky to have a committed group of volunteers in the Parents and Friends Group. Their efforts are essential in fundraising, organizing school events, and offering overall support. This year, they were instrumental in hosting Sports Day and the Mother's/Father's Day stalls. We greatly appreciate their ongoing assistance and support throughout the year.

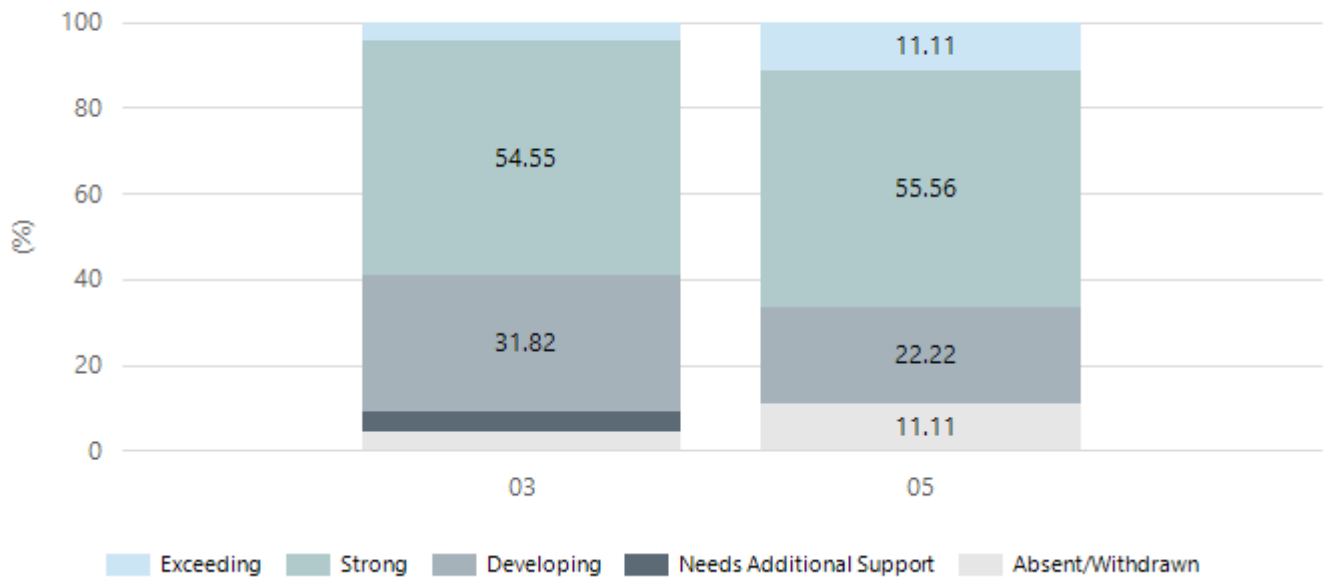
Finally, I would like to extend my thanks to my fellow Governing Council members. Your dedication and support of the school community are greatly appreciated.

Performance Summary

NAPLAN Proficiency

In 2023 the Australian Curriculum, Assessment and Reporting Authority (ACARA) - a Commonwealth Independent statutory authority - announced changes to NAPLAN performance reporting. The new approach replaces the previous numerical NAPLAN bands and the national minimum standard.

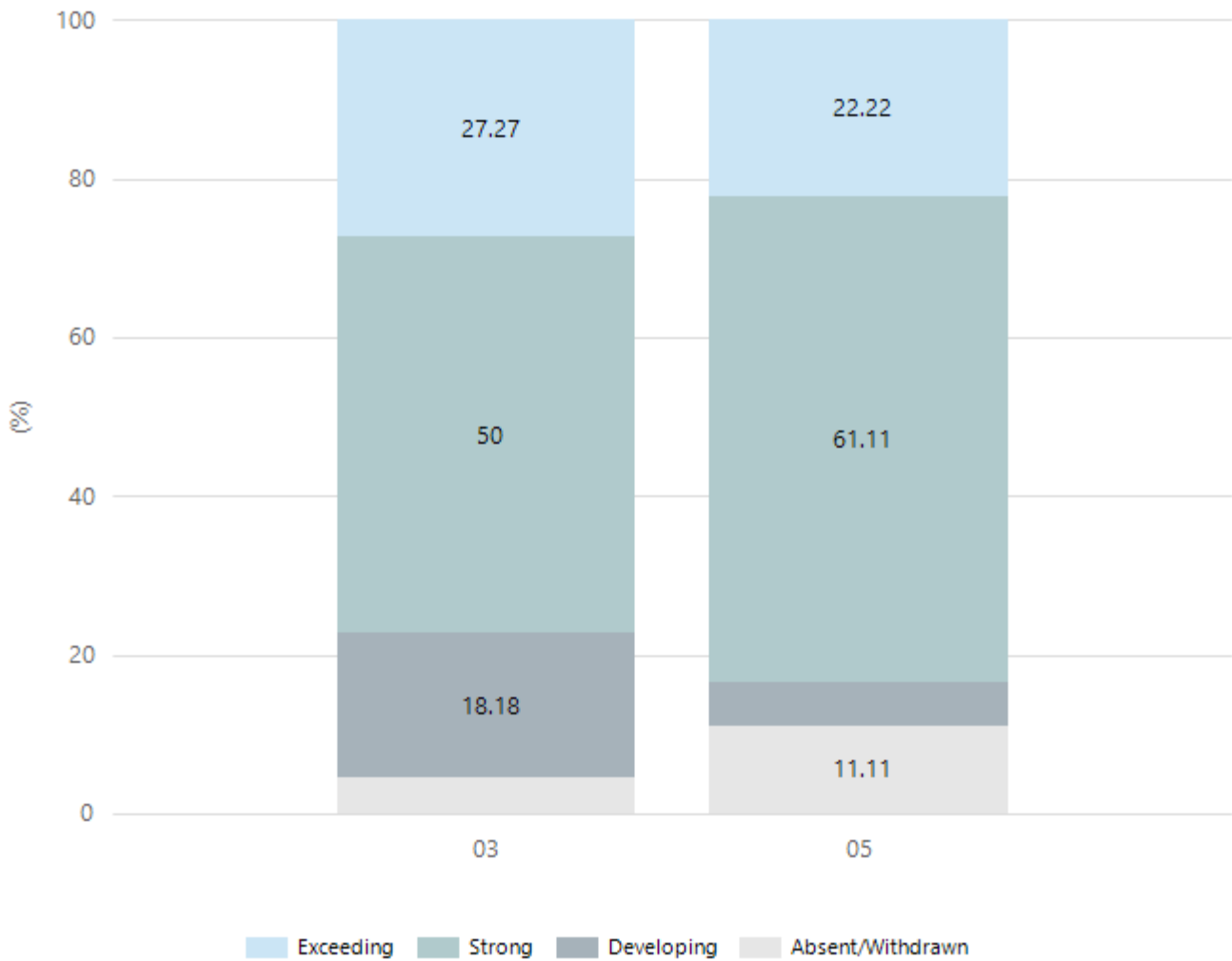
Numeracy



Year Level	03	05
Exceeding	1	2
Strong	12	10
Developing	7	4
Needs Additional Support	1	
Absent/Withdrawn	1	2
Total	22	18

Data Source: Department for Education Assessment Data Holdings, 2024. If there are less than 6 students who sat NAPLAN in a school, no information will be shown. If a year level has less than 6 students, that year level will not be shown in NAPLAN results.

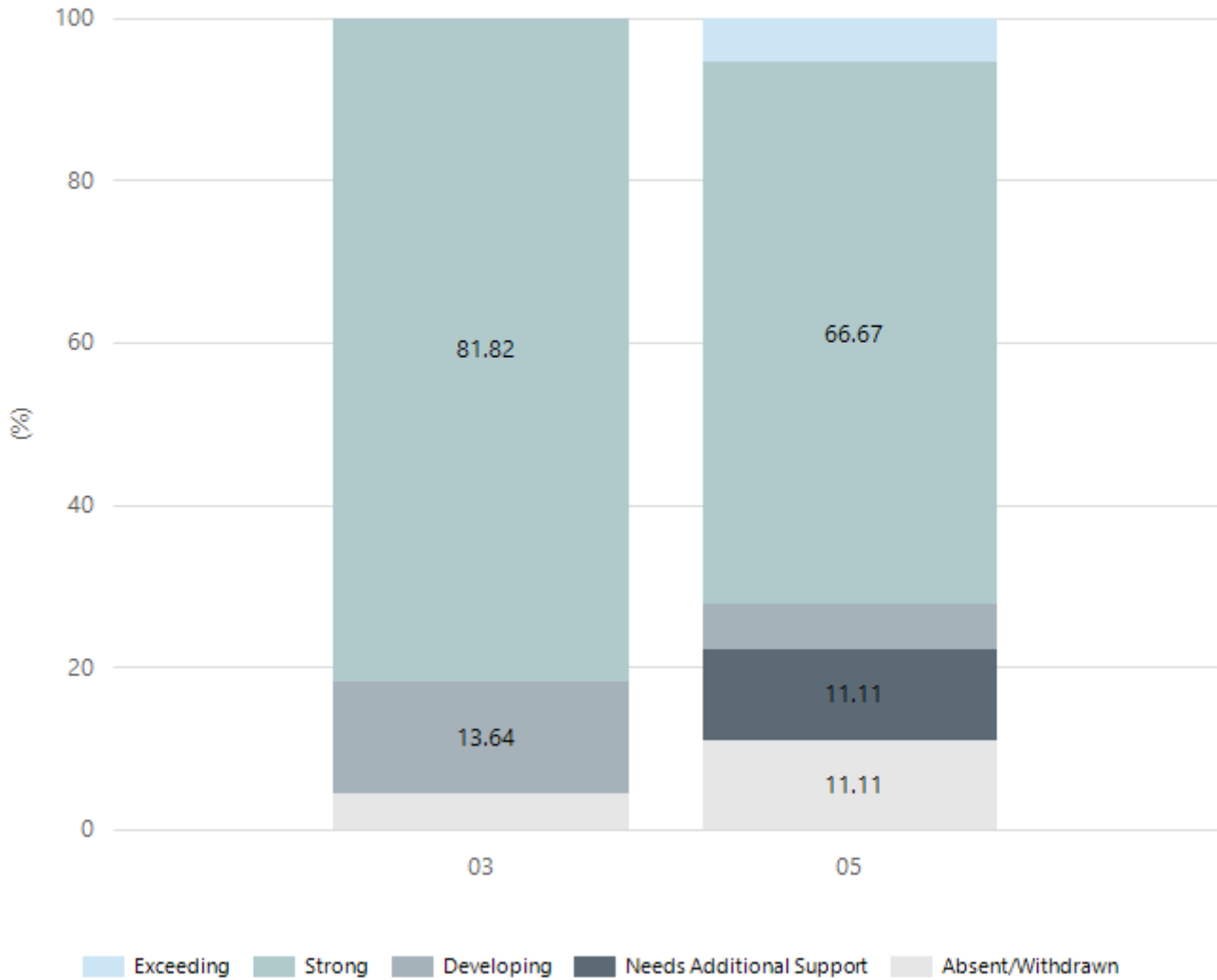
Reading



Year Level	03	05
Exceeding	6	4
Strong	11	11
Developing	4	1
Absent/Withdrawn	1	2
Total	22	18

Data Source: Department for Education Assessment Data Holdings, 2024. If there are less than 6 students who sat NAPLAN in a school, no information will be shown. If a year level has less than 6 students, that year level will not be shown in NAPLAN results.

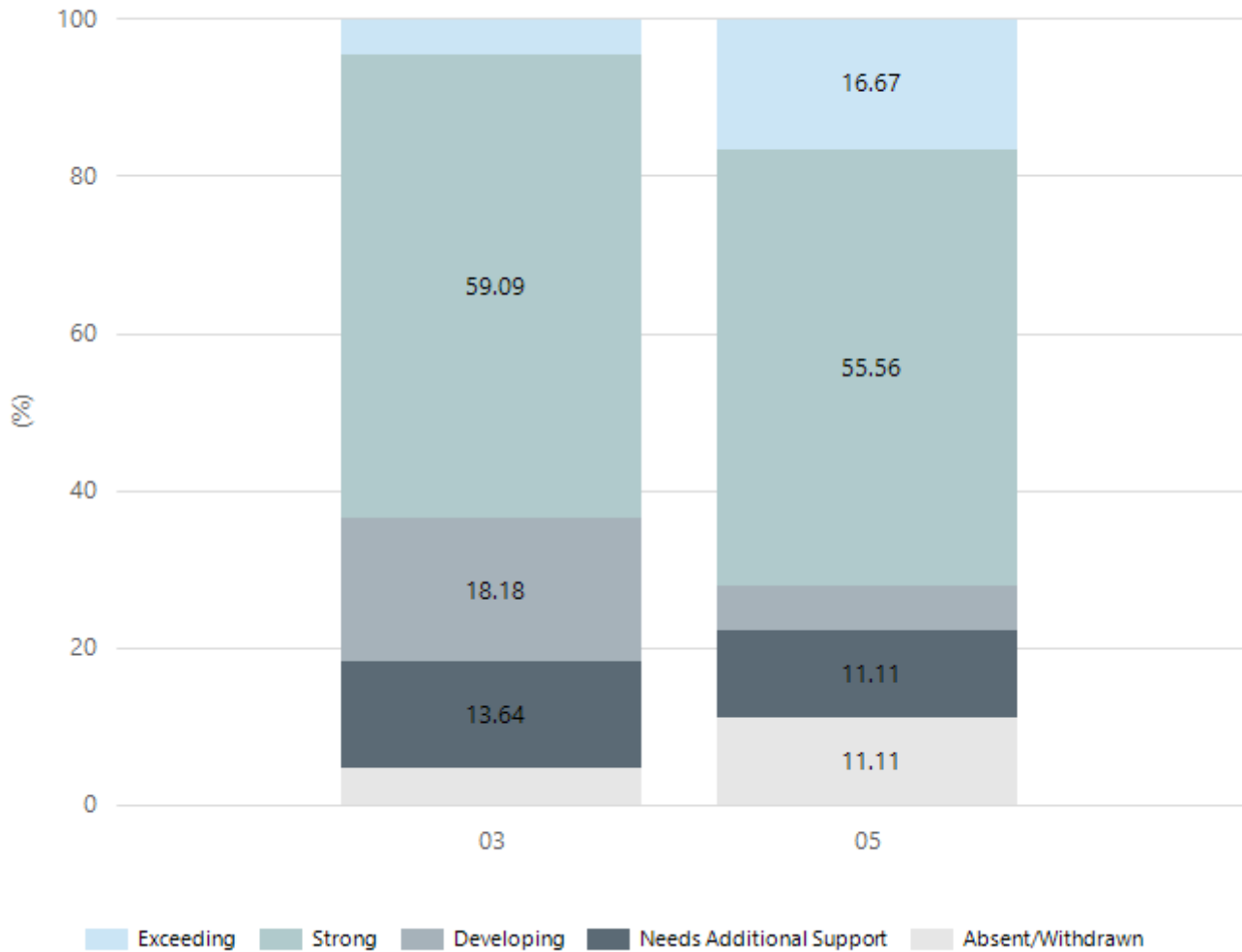
Writing



Year Level	03	05
Exceeding		1
Strong	18	12
Developing	3	1
Needs Additional Support		2
Absent/Withdrawn	1	2
Total	22	18

Data Source: Department for Education Assessment Data Holdings, 2024. If there are less than 6 students who sat NAPLAN in a school, no information will be shown. If a year level has less than 6 students, that year level will not be shown in NAPLAN results.

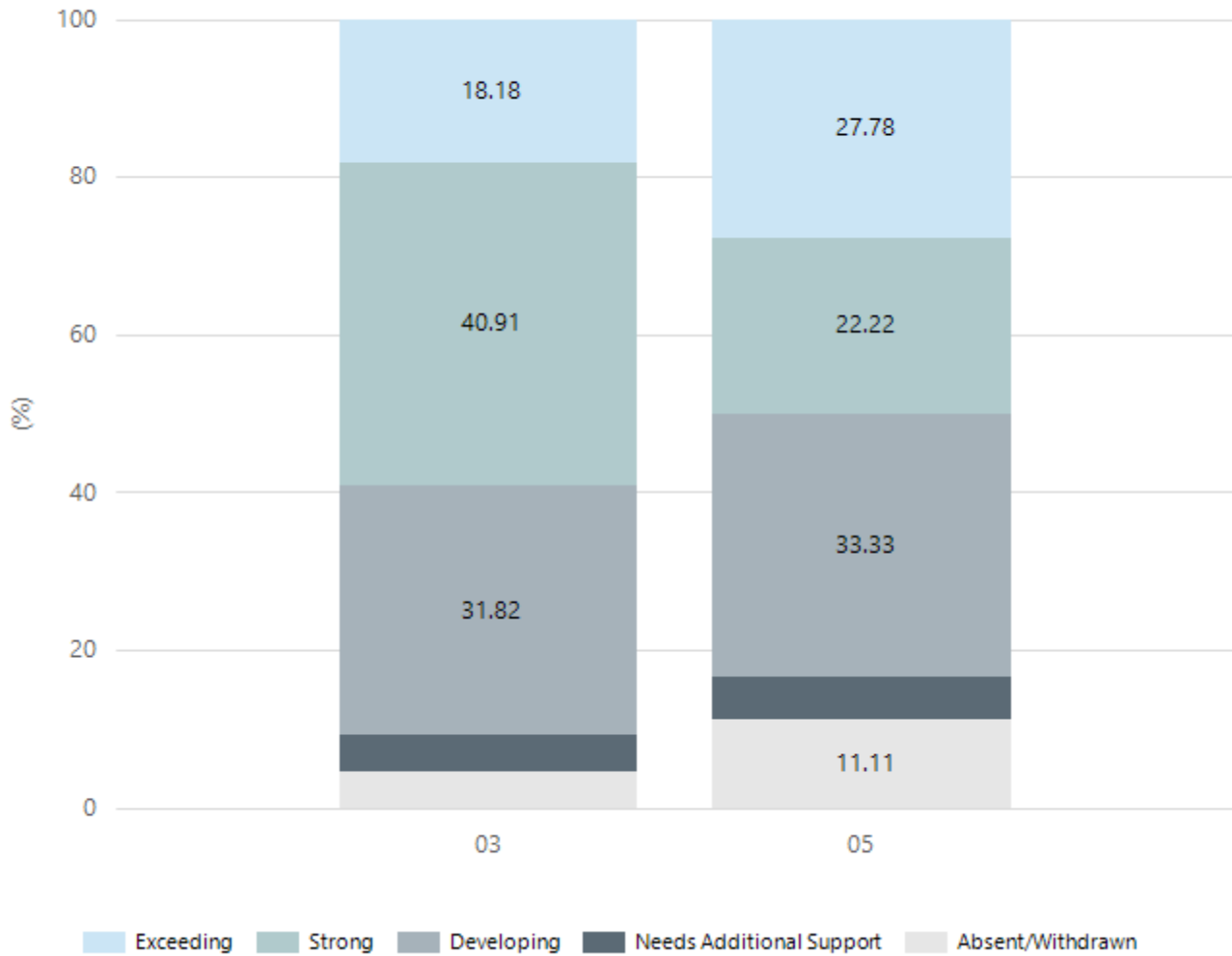
Grammar



Year Level	03	05
Exceeding	1	3
Strong	13	10
Developing	4	1
Needs Additional Support	3	2
Absent/Withdrawn	1	2
Total	22	18

Data Source: Department for Education Assessment Data Holdings, 2024. If there are less than 6 students who sat NAPLAN in a school, no information will be shown. If a year level has less than 6 students, that year level will not be shown in NAPLAN results.

Spelling



Year Level	03	05
Exceeding	4	5
Strong	9	4
Developing	7	6
Needs Additional Support	1	1
Absent/Withdrawn	1	2
Total	22	18

Data Source: Department for Education Assessment Data Holdings, 2024. If there are less than 6 students who sat NAPLAN in a school, no information will be shown. If a year level has less than 6 students, that year level will not be shown in NAPLAN results.

School Attendance

Year Level	2022	2023	2024
Reception	85.5%	90.6%	88.7%
Year 01	88.7%	90.1%	88.8%
Year 02	86.9%	92.3%	92.0%
Year 03	85.6%	88.2%	90.6%
Year 04	89.1%	87.2%	87.2%
Year 05	89.5%	89.4%	85.2%
Year 06	82.1%	91.8%	91.3%
Total	86.7%	90.0%	88.8%

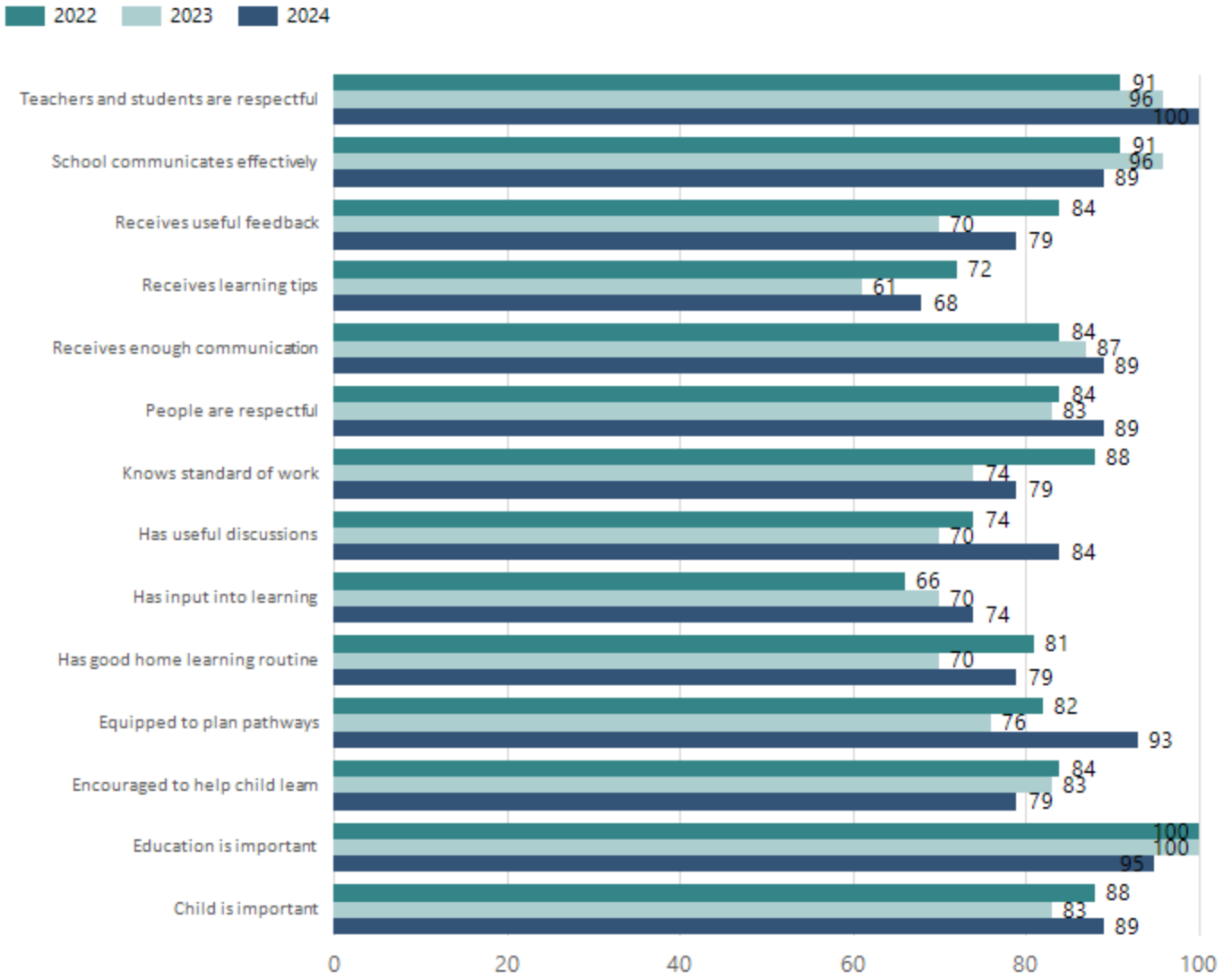
Data Source: Department for Education Attendance Data, Semester 1 Report 2024. A blank cell indicates there were no students enrolled. 'Primary Other' includes students enrolled in specialised education options. 'Secondary Other' includes students who have already spent a year at Year 12 and elected to undertake further study at Year 12.

Attendance Comment

In South Australia, all children and young people must be in school from 6 years to 16 years old. They must attend a government or non-government school full time. From age 16 to 17 however, young people must attend school or an approved learning program (such as an apprenticeship, traineeship, accredited course or university). Schools and parents must encourage and support students to come to school every day. Parents and caregivers must make sure their child is enrolled in a school, and attends school all day and everyday it is open, unless a child is sick or has an approved exemption. Teachers and leaders actively follow up when a student misses school, including recording all absences and non-attendance. All schools in South Australia have local attendance procedures governed under the Education and Children's Services Regulations 2020.

School Parent Opinion Survey Results

Proportion of agree/strongly agree response(%)



Data Source: 2024 Department for Education Parent Opinions Survey, Term 3 2024.

Intended Destination

Leave Reason	Number	%
NG - ATTENDING NON-GOV SCHOOL IN SA	2	40.0%
TG - TRANSFERRED TO SA GOVERNMENT SCHOOL	2	40.0%
WA - LEFT SA FOR WA	1	20.0%

Data Source: Department for Education Destination Data Report, 2024. Data extract term 3 2024. Data shows recorded destinations for students that left the school in the previous year. Data is uploaded by schools in term 3 and may not reflect final or total figures at time of report creation.

Highest Qualifications held by the teaching workforce and workforce composition

All teachers at this school are qualified and registered with the SA Teachers Registration Board.

Qualification Level	Number of Qualifications
Bachelor's degrees or Diplomas	9
Postgraduate Qualifications	2

Data Source: Data extracted from Mandatory Workforce Information Collections as on the last pay date of June 2024. As self-reported by staff in the system.

Please note: Data includes staff who are Actively employed and on extended paid leave. Please note only the highest qualification of the Teaching staff is reported. Excludes any number of other certifications earned.

Workforce composition including indigenous staff

	Teaching Staff		Non-Teaching Staff	
	Indigenous	Non-Indigenous	Indigenous	Non-Indigenous
Full-Time Equivalents	0.0	9.0	0.8	5.2
Persons	0.0	11.0	1.0	7.0

Data Source: Data extracted from Mandatory Workforce Information Collection as on the last pay date of June 2024.

Please note: Data includes staff who are actively employed and on extended paid leave. "Indigenous category" is self-reported by staff in the system.

Financial Statement

Funding Source	Amount
Grants: State	1 704 204.08
Grants: Commonwealth	4000.00
Parent Contributions	21 356.50
Fund Raising	9 060.90
Other	611

Data Source: School supplied data.